



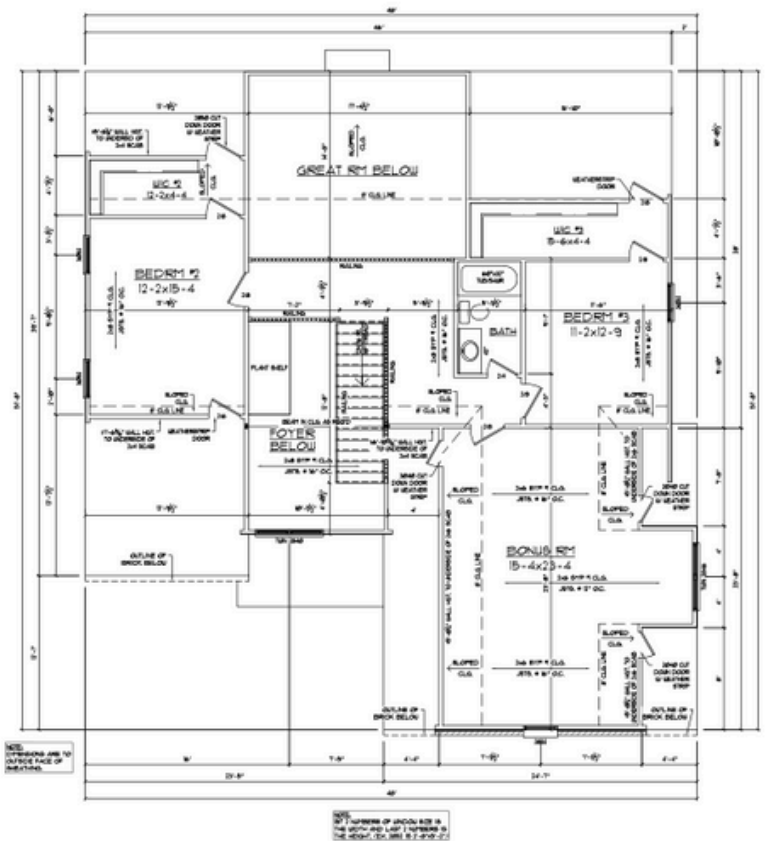
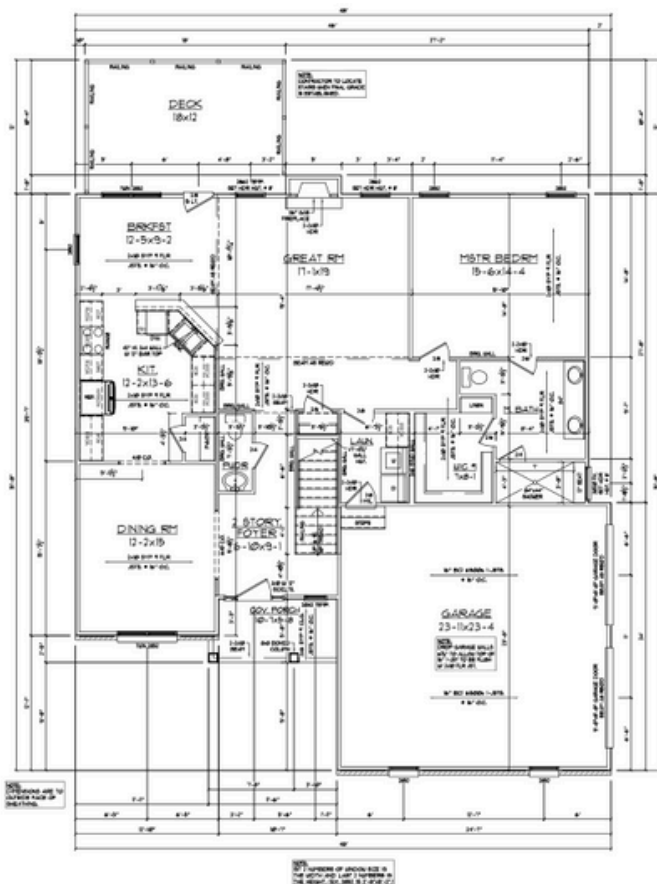
2,600 SQ. FT. | 3 BEDROOMS | 2.5 BATHS | PRIMARY ON MAIN | BONUS

Custom exterior and interior finish options available including board and batten siding, carriage-style garage doors, black vinyl trim, LVP flooring, Shaker cabinets, Shower tile, and more!

2,600 SQ. FT. | 3 BEDROOMS | 2.5 BATHS | PRIMARY ON MAIN | BONUS

## STANDARD FEATURES

- Primary on main level
- 2-Story foyer
- Dining & Breakfast areas
- Large Kitchen with pantry
- Bonus Room above Garage
- Walk-in Closets
- Catwalk overlooks Great Room



[www.HanesMeadows.com](http://www.HanesMeadows.com)



**ANEWHOMES**

For Details: 336.551.2134